



WORKPLACE + CAMPUS

PLACES FOR INNOVATION



CARDUCCI
ASSOCIATES

CARDUCCI ASSOCIATES

A photograph of a modern building with a rooftop garden. The building has a facade of horizontal grey slats. In the foreground, there is a wooden deck with a person sitting at a table, looking at a phone. The rooftop garden has various plants and flowers. The sky is clear and blue.

PROFILE

Founded in 1976, Carducci Associates is a professional landscape architecture and planning firm based in San Francisco and serving a wide range of public and private sector clients throughout California. Emphasizing personal and responsive client service, we work closely with each client during design and construction to devise unique, creative and effective solutions.

VIEWPOINT

We believe no two projects are alike, a conviction we convey through unique site-specific designs. We focus on clients' needs, creating opportunities for interaction between people and nature that result in memorable experiences.

PROFICIENCIES

We conceptualize landscapes that express an artistry and sensitivity to the interaction of social and natural systems. We develop concepts that are purposeful, buildable and sustainable.

We combine creative and technical ability in landscape architecture, planning and urban design with expertise in stormwater management and irrigation, Bay-friendly landscape principles and maintenance practices to conserve water, nurture soils, reduce use of chemicals and comply with stormwater regulations. Our approach creates habitats for birds, bees and other pollinators and beautiful and functional landscapes for people.

We collaborate with clients, other design professionals, multidisciplinary teams and contractors to conceptualize, detail and build complex projects.

We facilitate transparent community engagement processes responsive to the unique requirements of community-driven design that build community support toward a common purpose.

We deliver LEED® certified projects by employing sustainable measures and materials. Our projects provide open space, conserve energy and water, ameliorate the urban-heat island effect, control stormwater runoff, insulate buildings and create outdoor amenities for people.

VALUES

We are committed to the highest standards of social and environmental responsibility and ethical conduct. We provide safe working conditions, treat people with dignity and respect, act fairly and ethically, and use environmentally responsible practices. Our company policies address anti-corruption, anti-human trafficking and anti-slavery.

DRAWING FROM OUR PAST

We draw by hand throughout the design process, using hand drawn sketches and renderings to visualize ideas, develop solutions and collaborate with clients and other design professionals. As a complement to high-tech digital tools, this artistic "soft touch" enables viewers to use their imagination to complete the vision of the sketch. From sketches, we translate our designs into polished digital renderings. By using both analog and digital means, we take the best of the past and modern technology to more effectively design and communicate today.





180 EL CAMINO

SOUTH SAN FRANCISCO, CA

El Camino & Spruce Mixed-Use Redevelopment Project in South San Francisco is situated at the corner of El Camino Real and Spruce Avenue. Proposed development will remove existing vacant buildings on the site and locate with three research and development office buildings, approximately 100-150 units of multifamily residential, site landscaping and a parking structure. The new office buildings will consist of approximately 750,000 square feet of research and development office&lab space, 30,000 square feet of amenity. The research and development buildings will be positioned across a new interior street and adjacent to a new retail center. All buildings in the project will be tied together through landscaping and open space, creating pedestrian and bike friendly connections between the highly amenitized mixed - use campus.





TERMINAL 101

SOUTH SAN FRANCISCO, CA

Located near the SFO, the 26.8-acre campus serves the strong demand for high quality lab space, including three phases of development with 2.5 million SF of 6-story life science buildings and a mix of underground and above-grade parking. The project will include three stand-alone amenity buildings with a mix of cafes, fitness centers, conference-collaboration centers, indoor/outdoor gaming areas, lounge and gathering areas. Amenity spaces will also be provided in the life science buildings for flexible space, conferences, presentation facilities, lounges, and other services. Several elevated outdoor park settings and terraces will be provided throughout the site to accommodate outdoor workspace. Sustainable goals for the project include LEED Gold and Well Certification and incorporate South San Francisco's ongoing Sustainability Initiatives.



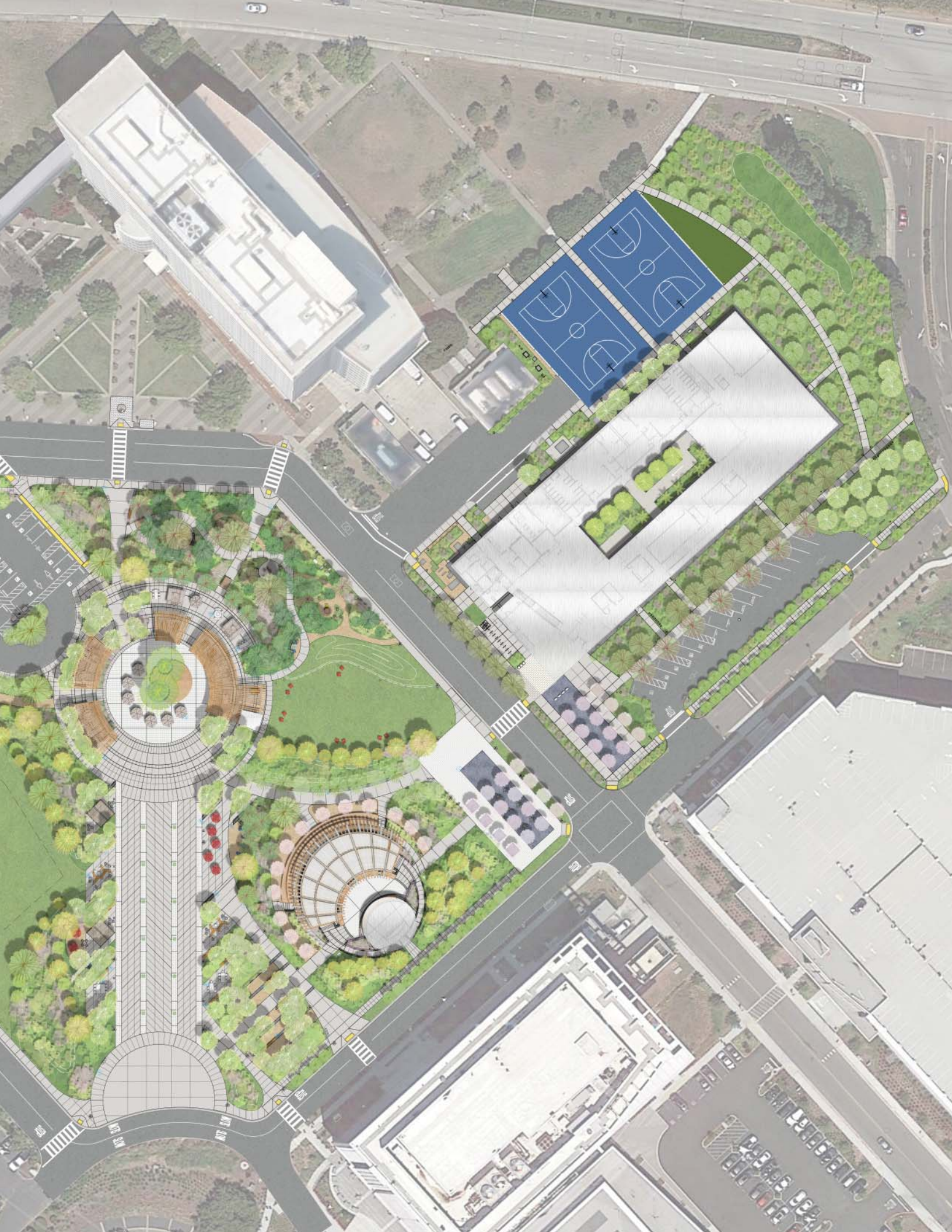


OUTDOOR WORK SPACE-PARK

SAN FRANCISCO BAY AREA

The outdoor workspace-park replaces an existing parking lot of 739 parking stalls with a new private park to function as a landscaped outdoor amenity and gathering space on a +5-acre site. Included is a covered presentation stage, partially covered amphitheater-style seating, trellised central gathering space, event promenade, outdoor site furniture, ancillary surface parking, and water-efficient and native landscaping, with recreational turf, groves of trees, and thematic gardens. The site will primarily serve on-campus employees, with a limited number of visitors for special events and gatherings. Taking cues from natural places near the site, the landscape design includes plant communities that complement the program and enhance ecological functions, including plants adapted to salty, windy and poorly drained soils, and provide a durable, water conserving, low maintenance palette for the project.



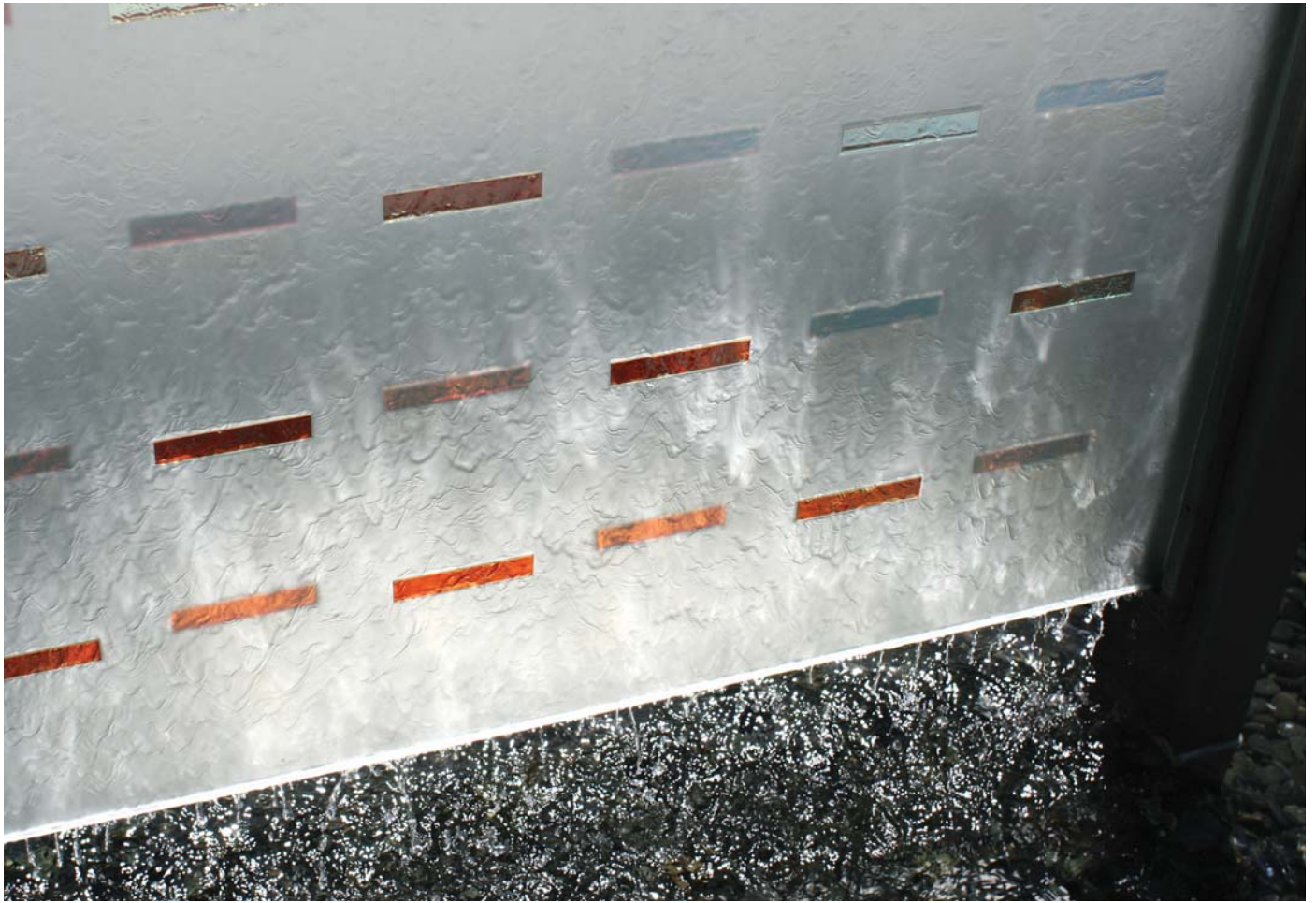


WELL BEING CENTER

SAN FRANCISCO BAY AREA

Carducci Associates provided site design for a life science company's new employee well-being center. Features include an entry plaza grove, two new basketball courts and synthetic turf lawn for recreation, a meadow, and paths that enhance campus connectivity. The new LEED Platinum and WELL certified building includes a gym, health consultation spaces, and conference rooms. Landscape is integrated throughout with three gestures, including a terrace with planters offering views of the San Francisco Bay, a grand stair with integrated planting, and a large jewel-like courtyard landscaped with trees and ferns. Now complete, the well-being center is a superb amenity that promotes health and wellness for all employees.





MARVELL CAMPUS

SANTA CLARA, CA

Arrival at Marvell Semiconductor, Inc. U.S. Headquarters in Santa Clara, California, is announced by elegant identity signage and sculpture that act as symbols of an innovative global corporation. Upon entering the campus, visitors are welcomed with colorful plantings and dancing water, while vehicles drive across a rich pattern of concrete pavers that run along a linear water feature/signage element and lead to a sculpture fountain that celebrates the flow of ideas at the core of Marvell's mission. An art plaza in the center of the campus features lighted kinetic water and wind sculptures that respond to shifts in wind and sunlight.





HITACHI CAMPUS

SANTA CLARA, CA

Hitachi Data Systems' purpose in updating the company's 3.25-acre campus was twofold: to create an outdoor retreat for its 2,800 employees and to extend Hitachi's innovative spirit beyond the office walls. A red Torii gate marks the entrance to the campus and signifies the company's cultural roots, while a series of meditative spaces and meandering pathways connect campus buildings. Seasonal planting, creek-like fountains, themed corner gardens, and playful landscape elements allow employees to experience nature, or to re-focus on projects outdoors. An island pavilion and grass lawns create spaces for lunchtime seating and corporate events, encouraging a work life beyond the cubicle.





CLOUDFLARE OFFICE

SAN FRANCISCO, CA

Carducci Associates designed an outdoor alley space for San Francisco startup, Cloudflare. Created to provide a lunch and meeting space at the same level as the first floor cafeteria, our solution for the narrow 15' alley called for a multi-functional deck with trash storage positioned under the decking structure. Additionally, our design preserved a non-flammable fire egress path to ensure employee safety. Situated in the South End Historical District, the Cloudflare building required a Certificate of Appropriateness Permit from the SF Planning Department, stipulating that materials and finishes visible to the public right of way must be consistent with the neighborhood's industrial character.

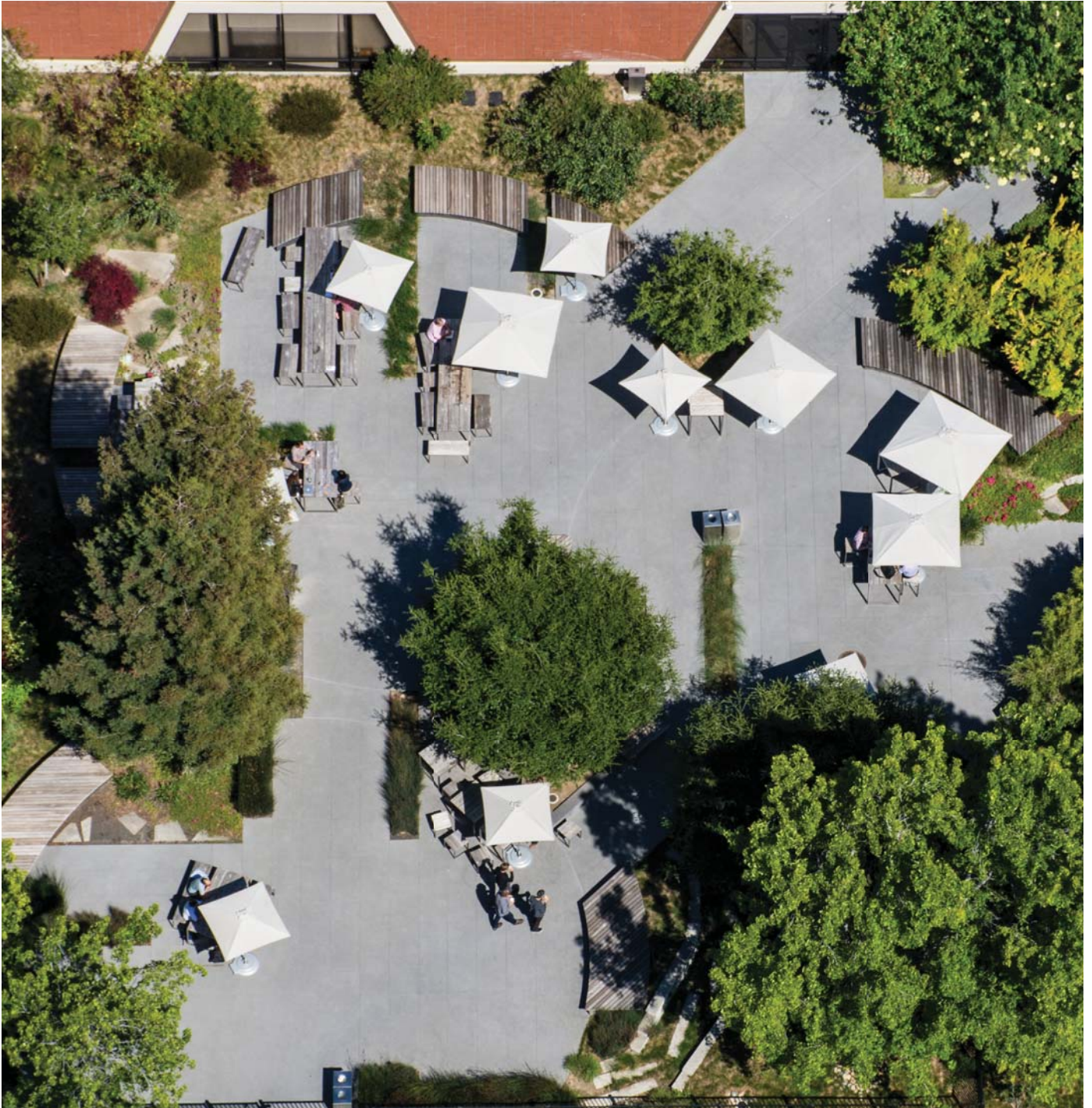




CORPORATE COURTYARD

CUPERTINO, CA

The client, a well-known high-tech giant, selected Carducci Associates to assess and evaluate the existing campus and subsequently, to select and design plant material, lighting, and pedestrian path of travel to and through the courtyards to create a user-friendly environment. Our team renovated the waiting areas and courtyard to provide a comfortable park-like setting where employees are inspired to interact creatively on an informal basis. Equipped with benches, tables, chairs, and shade structures, the area will be used for outdoor dining, meetings, and company celebrations.

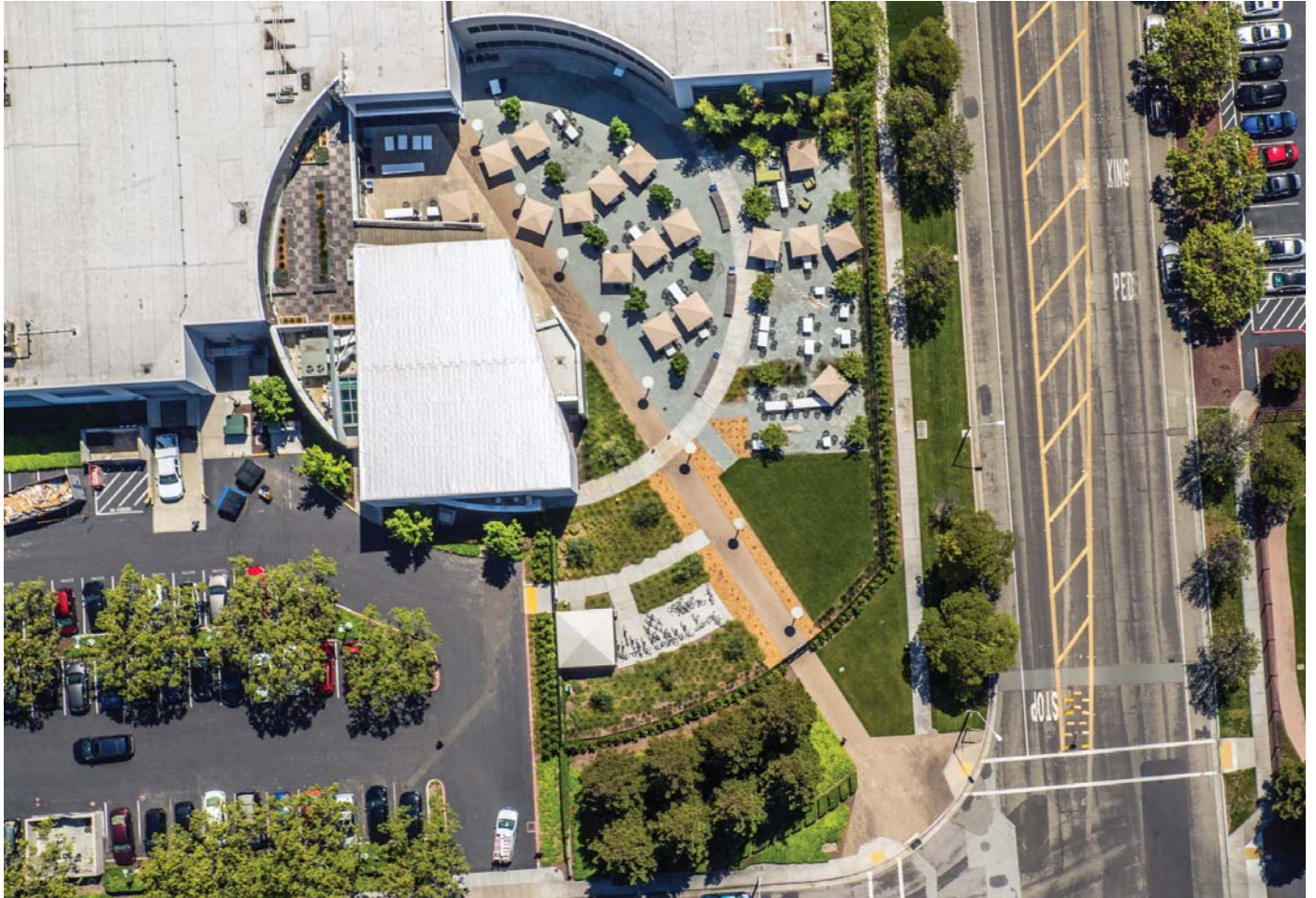




Corporate Courtyard

KIFER 4 CUPERTINO, CA

The client selected Carducci Associates to assess and evaluate Kifer 4's existing northwest courtyard and subsequently, redesigned its planting, paving materials and site furnishing to create an engaging café landscape and informal gathering space for its employees. Equipped with privacy and natural screening, a ping pong table, a variety of seating options and bordered by fine textured drought tolerant ornamentals, the northwest courtyard encourages its users to leisurely come and go and occupy the space as they please. The scope also included second and third floor renovations to existing patio spaces and refreshing the main entry with low water use planting. Bike parking was also added at each of the building entryways.





ALVES CAFFÉ

CUPERTINO, CA

Reflecting the company's creative, collaborative culture, this influential technology firm constructed a full-service employees-only restaurant that features indoor / outdoor seating, a second floor for auxiliary uses, a basement garage, and bicycle storage. Carducci Associates provided complete landscape architecture services, including: streetscape design, planting and irrigation design, and outdoor amenities coordinated with the architectural intent. The result is a private dining facility that gives employees ample space to gather for lunch, informal meetings, or socializing. Shaded outdoor seating ensures comfort on warm, sunny days.





GATHER

GATHER

GET
GATHER
&
DINE

AMERICA CENTER II

SAN JOSE, CA

America Center II is the second phase of a 13-acre master planned business campus in San Jose, California, that includes five buildings surrounded by an open space preserve. Phase II is comprised of two 6-story office buildings, a parking garage, and an amenity building with a café, fitness center, and rooftop putting green. The landscape connects the various work/play areas of the campus, which encompass outdoor amenities for sports and recreation, open grass and picnic areas, and collaborative work areas with campus-wide universal Wi-Fi. As part of our work, Carducci Associates conducted a wind study used as a basis to site walkways and outdoor sitting areas.





Marvell Campus, Santa Clara, CA

We collaborate with each client to realize effective, creative, and sustainable design solutions.

VINCENT LATTANZIO

Principal
415 447 5214 (D)
415 377 8836 (M)
vince@carducciassociates.com

WILLIAM FEE

Principal
415 447 5215 (D)
bill@carducciassociates.com

JIN KIM

Principal
415 447 5225 (D)
jin@carducciassociates.com



CARDUCCI
ASSOCIATES

555 BEACH STREET FOURTH FLOOR
SAN FRANCISCO CA 94133
415 674 0990
info@carducciassociates.com
www.carducciassociates.com

