

An aerial photograph of a modern building's courtyard. The building features a facade of large, light-colored rectangular panels with vertical blue accents. The courtyard is a central green space with a paved walkway and some trees. The image is characterized by strong, geometric shadows cast by the building's structure onto the courtyard and the building's facade.

# PUBLIC PLACES + CIVIC

PLACES FOR GATHERING



CARDUCCI  
ASSOCIATES





El Cerrito City Hall, El Cerrito, CA





## CARDUCCI ASSOCIATES

### PROFILE

Founded in 1976, Carducci Associates is a professional landscape architecture and planning firm based in San Francisco and serving a wide range of public and private sector clients throughout California. Emphasizing personal and responsive client service, we work closely with each client during design and construction to devise unique, creative and effective solutions.

### VIEWPOINT

We believe no two projects are alike, a conviction we convey through unique site-specific designs. We focus on clients' needs, creating opportunities for interaction between people and nature that result in memorable experiences.

### PROFICIENCIES

We conceptualize landscapes that express an artistry and sensitivity to the interaction of social and natural systems. We develop concepts that are purposeful, buildable and sustainable.

We combine creative and technical ability in landscape architecture, planning and urban design with expertise in stormwater management and irrigation, Bay-friendly landscape principles and maintenance practices to conserve water, nurture soils, reduce use of chemicals and comply with stormwater regulations. Our approach creates habitats for birds, bees and other pollinators and beautiful and functional landscapes for people.

We collaborate with clients, other design professionals, multidisciplinary teams and contractors to conceptualize, detail and build complex projects.

We facilitate transparent community engagement processes responsive to the unique requirements of community-driven design that build community support toward a common purpose.

We deliver LEED® certified projects by employing sustainable measures and materials. Our projects provide open space, conserve energy and water, ameliorate the urban-heat island effect, control stormwater runoff, insulate buildings and create outdoor amenities for people.

### VALUES

We are committed to the highest standards of social and environmental responsibility and ethical conduct. We provide safe working conditions, treat people with dignity and respect, act fairly and ethically, and use environmentally responsible practices. Our company policies address anti-corruption, anti-human trafficking and anti-slavery.

### DRAWING FROM OUR PAST

We draw by hand throughout the design process, using hand drawn sketches and renderings to visualize ideas, develop solutions and collaborate with clients and other design professionals. As a complement to high-tech digital tools, this artistic "soft touch" enables viewers to use their imagination to complete the vision of the sketch. From sketches, we translate our designs into polished digital renderings. By using both analog and digital means, we take the best of the past and modern technology to more effectively design and communicate today.





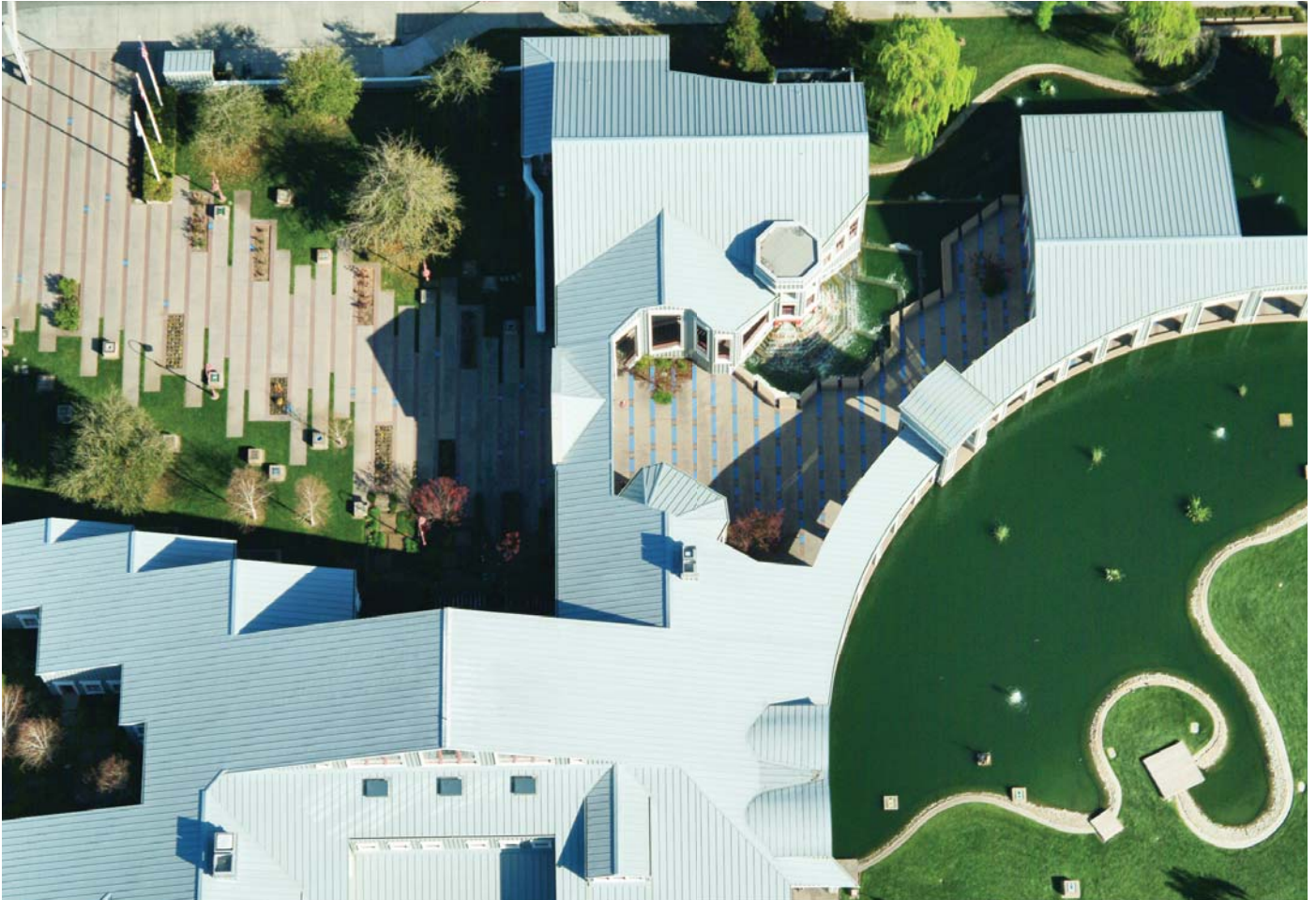
Pleasant Hill City Hall



## PLEASANT HILL CITY HALL

PLEASANT HILL, CA

Pleasant Hill's new City Hall celebrates the active participation and involvement of citizens in the community. Inspired by concepts of community and public service, the project includes art podiums set in a plaza featuring engraved tiles and adjoining garden pavilions that lead to a fountain courtyard, lake-side theater, demonstration garden, and art gazebo, each connected by walkways that wind through a peaceful garden setting. A fountain lake acts as a reservoir for non-potable well water, which is used to cool buildings and refresh the landscape, sustaining an ecological balance between the natural and built environment.







Peninsula Jewish Community Center



## PENINSULA JEWISH COMMUNITY CENTER

FOSTER CITY, CA

The Peninsula Jewish Community Center in Foster City, California, commissioned Carducci Associates to provide schematic design and construction documents for a new \$6.5 million multi-use development. The spacious Community Center campus incorporates a pre-school, a youth after-school program, plus a cultural and performing arts center, fitness/wellness center, swimming pools and community gardens. Site amenities also include a large turf field, basketball court, playgrounds, parking lot, walkways, and eating areas.





"In the process of developing the design with your company, Agency staff were always very impressed by the crisp and methodical way in which you encouraged orderly decisions to get to a beautiful, practical project."





## MAYFAIR COMMUNITY CENTER

SAN JOSE, CALIFORNIA

The LEED® certified Mayfair Community Center is surrounded by an eight-acre park with a neighboring community garden. Landscape architecture was a critical factor in earning LEED points and promoting sustainable design and maintenance practices. Carducci Associates followed xeriscaping principles, using colorful, drought-tolerant plants, including succulents and cacti, for water conservation. Our team preserved existing stone pine trees and maximized open space for the adjacent creek, a sensitive riparian habitat; native trees were added for stormwater mitigation. Renovated park areas with shaded ADA play equipment and renewed picnic areas, along with improved lighting throughout, have increased usability, site safety, and visibility.









## DUBLIN LIBRARY

DUBLIN, CALIFORNIA

Carducci Associates successfully completed schematic, site planning, and full construction documents for the landscape of Dublin Public Library; a unique building that features fanciful book sculptures flanking the entrance. Designed to create a strong connection between the interior of the library and landscape, a shade garden outside the main reading room fosters a relaxed, meditative mood. A imaginative viewing garden, based on Alice in Wonderland, contains flowering trees, perennials and giant sunflowers. Beyond the south-facing library window, visitors can view California native plants. Terraces provide peaceful spots for staff breaks.







El Cerrito City Hall



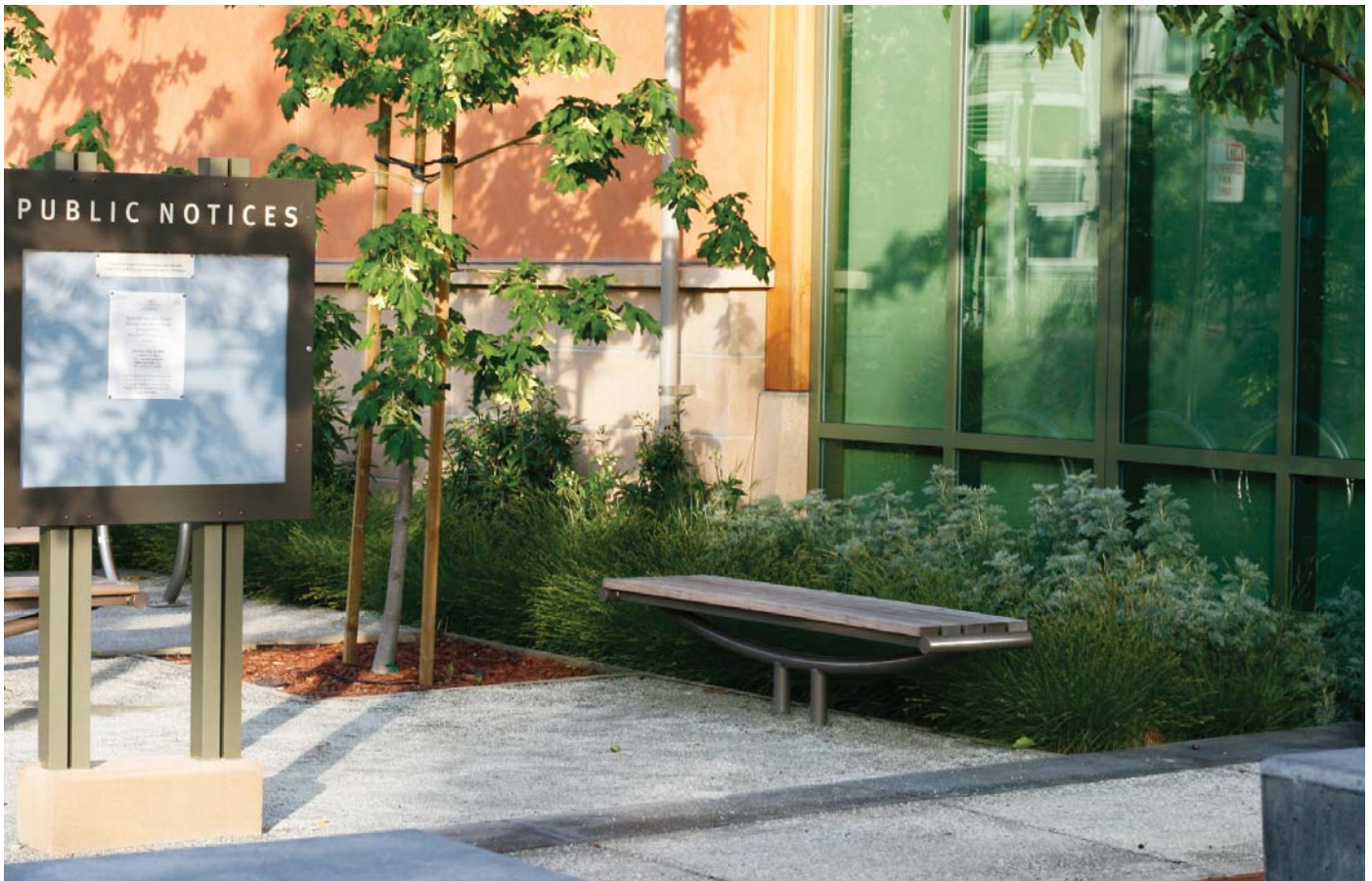
## EL CERRITO CITY HALL

EL CERRITO, CALIFORNIA

A model of sustainable design, the LEED® certified City Hall landscape includes a public plaza and an educational landscape composed of native plants that display the diversity of California's many habitats. The drought-tolerant plantings also recycle building and site run-off as irrigation water, minimizing impact on the municipal storm drainage system by filtering and storing water on-site. A creek-inspired fountain evokes the journey water takes from the Sierra Nevada to the Pacific Ocean. Carducci Associates' design creates spaces for community and civic events, environmental education, public art, and the enjoyment of natural beauty within the urban environment.









# PORTOLA VALLEY TOWN CENTER

PORTOLA VALLEY, CALIFORNIA

Portola Valley Town Center occupies an 11-acre site and sits beside a meadow and walnut grove, close to the San Andreas fault. Comprising a library, town hall, and community hall, the Center site also includes a 300-foot-long stretch of restored creek formerly diverted into a culvert. Carducci Associates' landscape design makes use of native plant species that create a beautiful, low maintenance, and ecologically sound landscape. Our creative team also designed the athletic facilities: a baseball field, soccer field, and tennis courts. As part of seeking LEED® Platinum certification for the Center, we provided an efficiency analysis of our irrigation design.







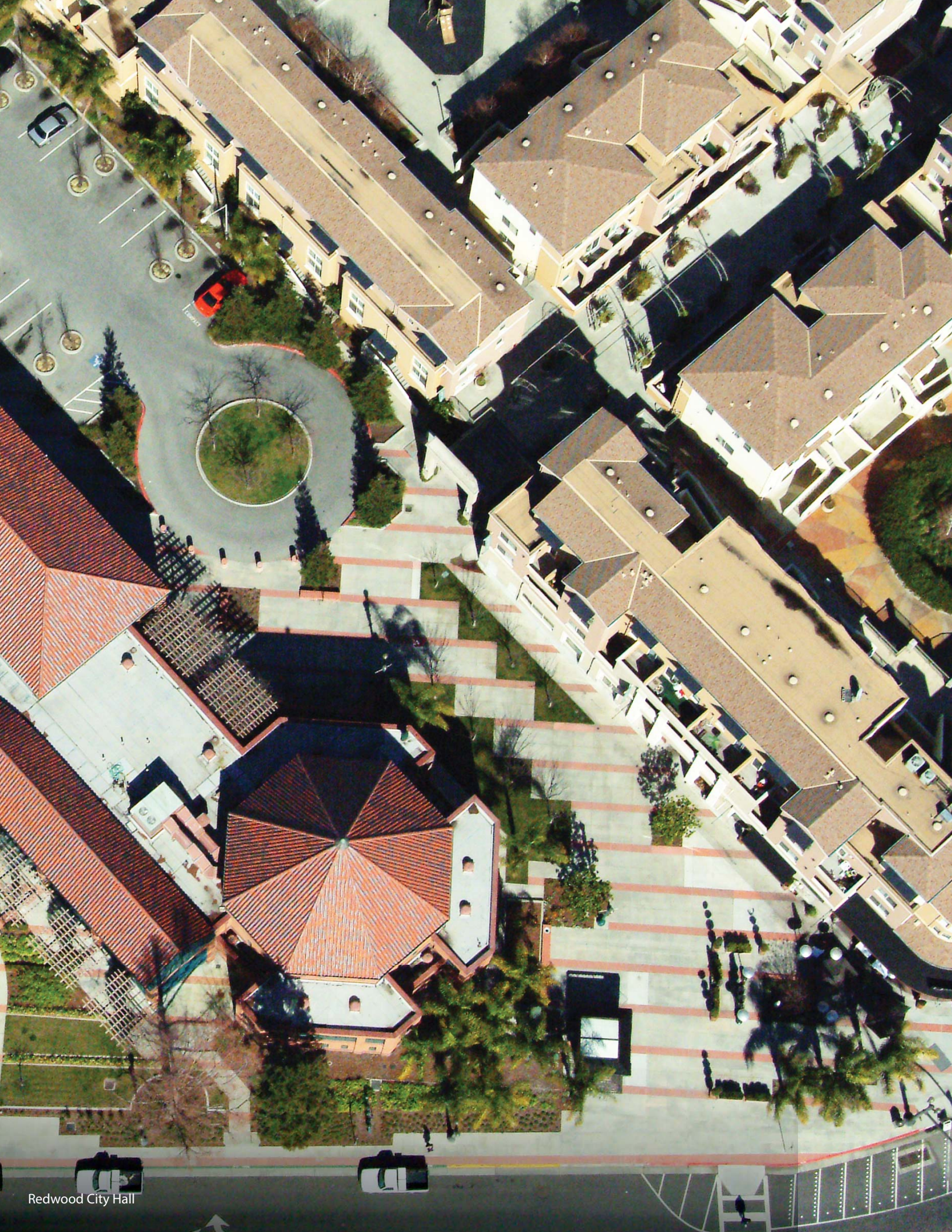
Portola Valley Town Center



"We trust them to bring our design work into reality with sensitivity to both the architectural detail and quality we demand and the budgetary and schedule needs of our clients. Carducci Associates has our highest recommendation."







Redwood City Hall



## REDWOOD CITY HALL

REDWOOD CITY, CA

Redwood City Hall is a part of a larger mixed-use urban development with housing and retail/commercial spaces. Carducci Associates' design for the project focused on creation of public space for day and evening use, sensitivity to existing mature trees, and integration of the site with the City Hall. The City Hall building was shaped around existing mature trees, which include a Coast Redwood that is a special landmark, serving as the city's living holiday tree. A plaza space allows for outdoor music and art events, and adds to the City Hall's identity as a vibrant community hub.







Brenda Lopez Memorial Plaza



## BRENDA LOPEZ MEMORIAL PLAZA

SAN JOSE, CA

The Brenda Lopez Memorial Plaza fulfilled much of the City of San Jose Redevelopment Agency's ambition to convert a public street to a vital urban link between Washington Elementary School and a Youth Center and La Biblioteca Latinoamericana. The project included concrete paving inscribed with art work, entry gates, picnic areas, benches, tree planting, a reinforced lawn, a time capsule, and a memorial to Brenda Lopez, a San Jose resident who was active in the community and instrumental in creating the Folklorico Dance Group.







Roseville Town Square, Roseville, CA



"We trust them to bring our design work into reality with sensitivity to both the architectural detail and quality we demand and the budgetary and schedule needs of our clients. Carducci Associates has our highest recommendation."

**VINCENT LATTANZIO**

Principal

415 447 5214

vince@carducciassociates.com

**WILLIAM FEE**

Principal

415 447 5215

bill@carducciassociates.com

**JIN KIM**

Principal

415 447 5225

jjin@carducciassociates.com



**CARDUCCI**  
**ASSOCIATES**

555 BEACH STREET FOURTH FLOOR

SAN FRANCISCO CA 94133

415 674 0990

info@carducciassociates.com

www.carducciassociates.com



